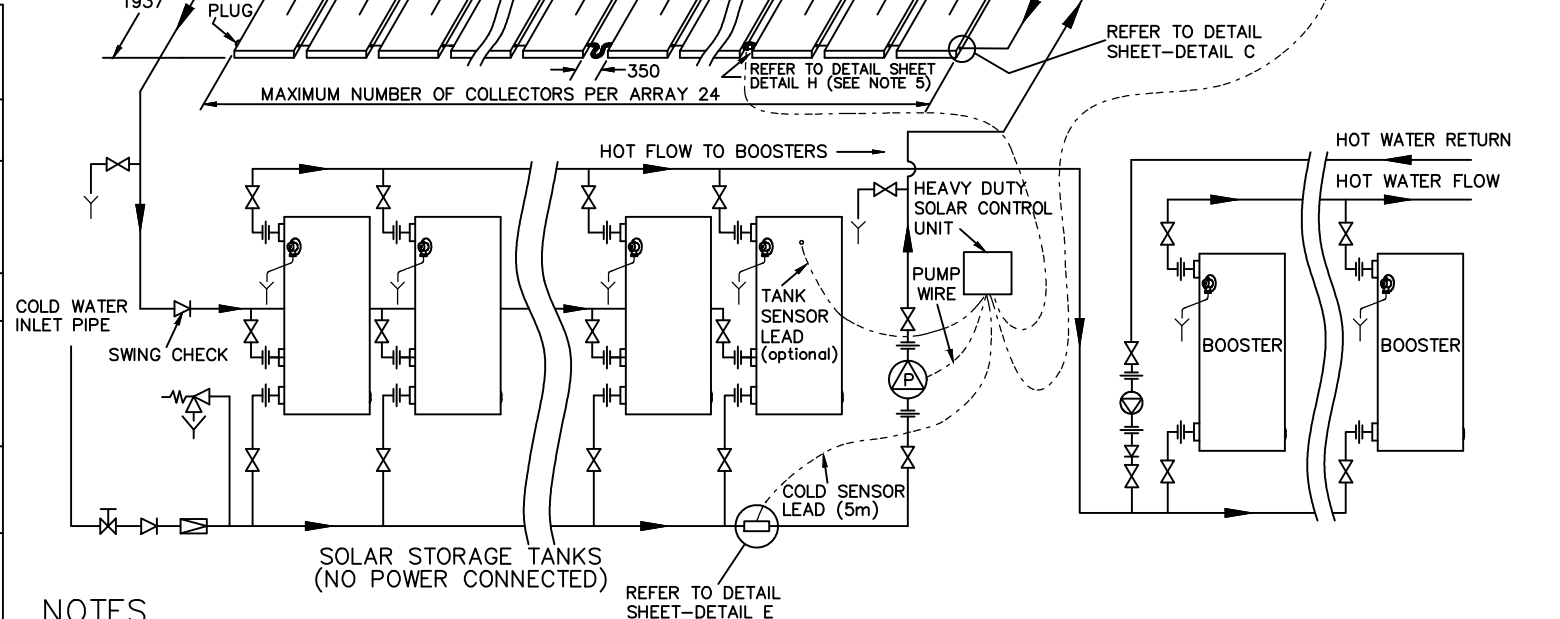


Solar Loline Commercial Components Required	
DESCRIPTION	RHEEM P/No:
Solar Control Unit – Heavy Duty (1 per system) supplied with cold sensor lead (5m) and tank sensor lead (5m)	299303
Sensor Extension Lead 4 core 20m (As and if required)	057305
Connector Sensor Kit MK2 – NPT (1 kit per system) Kit contains 1 each Cold Sensor Adaptor Assy 1" BSP, Hot Sensor Connector, Frost Sensor Union, O'-ring (3), Compression Nut 3/4", Compression Olive 3/4", Hot/Frost Sensor Lead 30m	299304
Air Eliminator Kit (1 kit per array) Kit contains 1 each Automatic Air Eliminator, Tee Fitting, Reducing Bush	299159
End Plug Kit – NPT (1 kit per array) Kit contains Nut M33 (2), Blanking Disc (2), O'-ring (2)	299153
Collector In/Out Kit 3/4" – NPT (1 kit per array) Kit contains Adaptor Collector M33 x 3/4" (2), O'-ring (2), Compression Nut 3/4" (2), Compression Olive 3/4" (2)	299155
Expansion Tube Kit – NPT (1 kit for every 8 collectors in an array) Kit contains Expansion Tube 3/4" (2), Fitting union 3/4" flared (4), O'-ring (4),	299305
Connector Kit – NPT (1 kit per 4 collectors) Kit contains Union L (8), O'-ring (16)	299152
Circulator – Grundfos UPS20–60N or Grundfos UPS32–80N	56860242 56860243
Collector Angle (1 per 2 collectors – pitched roof)	191613
Collector Strap (2 per collector – pitched roof)	191801
Variable Pitch Frame (2 panel – flat roof)	12106871
Variable Pitch Frame (1 panel – flat roof)	12106870

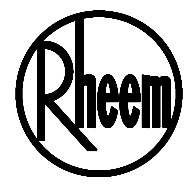


**NOTES**

- SOLAR FLOW AND RETURN PIPES TO BE SIZED AS SPECIFIED BY RHEEM.
- FLOW AND RETURN LINES TO BE INSULATED WITH CLOSED CELL POLYMER INSULATION. MINIMUM THICKNESS 13mm CAPABLE OF WITHSTANDING THE TEMPERATURE OF THE WATER GENERATED BY THE SOLAR COLLECTORS UNDER STAGNATION CONDITIONS UP TO 150°C. INSULATION MUST BE WEATHER PROOF & UV RESISTANT IF EXPOSED.
- MAXIMUM NUMBER OF COLLECTORS IN AN ARRAY IS TWENTY FOUR (24).
- IF THERE ARE MORE THAN 8 COLLECTORS PER ARRAY, EXPANSION TUBES ARE REQUIRED AT EVERY EIGHTH (OR FEWER) COLLECTOR.
- FROST SENSOR (DETAIL H) TO BE POSITIONED AT THE BOTTOM OF A COLLECTOR, IN ANY ARRAY, AS NEAR AS PRACTICAL TO THE CENTRE OF THE ARRAY IF LESS THAN 9 COLLECTORS ARE USED IN THE ARRAY, OR AS NEAR AS PRACTICAL TO THE CENTRE OF A SECTION OF COLLECTORS IF AN EXPANSION TUBE IS USED.
- MAXIMUM SOLAR STORAGE TANKS IN A BANK IS 10, MULTIPLE BANKS CAN BE INSTALLED.
- A MINIMUM OF 900mm SHOULD BE LEFT IN FRONT OF THE SOLAR STORAGE TANK OR BOOSTER WATER HEATER FOR ACCESS, SERVICING AND TANK REMOVAL.

**LEGEND**

- STOP COCK
- NON RETURN VALVE
- PRESSURE LIMITING VALVE (IF REQUIRED)
- EXPANSION CONTROL VALVE
- GATE VALVE OR BALL VALVE
- CIRCULATOR
- UNION
- TUNDISH
- DIRECTION OF FLOW



**RHEEM COMMERCIAL SOLAR LOLINE DESIGN DOUBLE ARRAY  
FROST SENSOR, NPT200 COLLECTORS**