

RHEEM CONTINUOUS FLOW GAS WATER HEATERS



NEW LOOK

NEW FEATURES

Go with the Flow

STEADY, HOT & STRONG

INSTALL A RHEEM™

www.rheem.co.nz

Go with the Flow

RHEEM CONTINUOUS FLOW GAS HOT WATER

Rheem continuous flow gas water heaters deliver hot water when you need it, for as long as you need it.¹

Working differently from traditional storage water heaters, continuous flow water heaters only heat water on demand rather than heating and storing water until needed. Appliances can be conveniently mounted to, or recessed into, your exterior wall, taking up less space. They are ideal for homes with high peak loads or when hot water is required occasionally such as at a holiday home.

Either connected to natural gas or to ULPG storage bottles, the water temperature can be set either on the appliances or with optional remote temperature controllers installed indoors.

In homes where there is a high demand for water, or in colder areas where ambient water temperature is low, two appliances can be linked together using the Rheem EZ Link® system to supply twice the flow.

HOW IT WORKS

The water heater operates automatically, heating the water as it passes through the appliance. When a hot tap is opened, the gas burners ignite to provide immediate heating of the water. The heat produced by the burner is transferred to the water through the heat exchanger. The gas burners extinguish when the hot tap is closed.

Rheem Continuous Flow Gas Water Heaters

- Flamesafe overheat protection
- 6 star energy rating
- Digital display for easy fault diagnosis and service
- Frost protected down to -20°C^2
- Rheem EZ Link® compatible to link two units for increased supply
- Optional remote temperature controllers

16L - 27L per minute

Natural Gas or ULPG

¹Providing gas, water and power are available

²Power must remain to the unit for the frost protection function to operate

*Hot water,
when you need it!*

Continuous Flow solutions for every size home and budget



Outdoor - 16L/min
1–1.5 Bathrooms, 1–3 people



An ideal solution for compact home sites, baches, cribs or apartments.



Outdoor - 20L/min
1.5–2 Bathrooms, 2–4 people



Medium capacity model ideal for small to medium sized homes and apartments.



Outdoor - 24L/min
2–3 Bathrooms, 4–5 people



A popular model in more temperate areas, with the capacity to suit most homes.



Outdoor - 27L/min
2.5–3 Bathrooms, 4–6 people



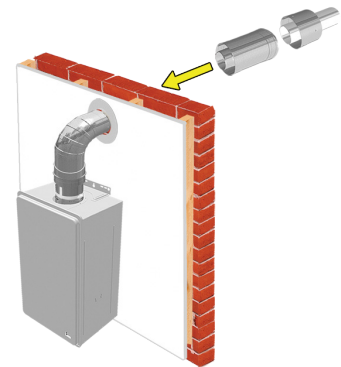
Our most popular capacity, ideal for larger families with limited space and high demands for hot water.



Indoor - 27L/min
2.5–3 Bathrooms, 4–6 people



The only Rheem indoor continuous flow model (must be flued to the outside of the building).



Flue Kit

The Indoor model must be installed using a certified Rheem flue system. Always check with local authorities that the installation complies with all regulations applicable in your area.

ACCESSORIES

Natural Gas ULPG



Pipe Cover

Designed to cover pipework and valves.



Recess Box

Recess box comes with door and mounting brackets to fit various models.



EZ Link® Kit

Links two units together and provides staged heating to reduce wear and energy use. Kit contains 1.8m cable and fittings.




Standard



Deluxe

Remote Temperature Controllers

Deluxe controllers offer a 'bath fill' function for added convenience and safety.



Continuous
hot water
for the
whole family



STEADY, HOT & STRONG

INSTALL A RHEEM™

www.rheem.co.nz

WHY CHOOSE RHEEM GAS CONTINUOUS FLOW?



ENERGY EFFICIENT

All models in the Rheem continuous flow gas water heater range have a 6 star energy rating.



10 YEAR WARRANTY

Rheem offer a 10 year warranty on the heat exchanger and a 3 year warranty on parts and labour.



YOU'RE IN CONTROL

Optional intelligent soft touch control pads (Standard and Deluxe available) allow easy setting of safe temperatures. Deluxe controllers also offer a "bath fill" mode and shut off safety features.



FLAMESAFE OVERHEAT PROTECTION SYSTEM

Automatically shuts down the unit should a fault occur.



FULL TECH SUPPORT

Rheem has a national service and network of after sales professionals to provide expert technical advice and fast service.



FROST PROTECTION

The Rheem range of continuous flow gas water heaters are frost protected down to -20°C (power must remain to the unit for the frost protection function to operate).



A TRUSTED BRAND

You can trust the Rheem brand to provide reliable products using high quality components.



TWICE THE FLOW

In homes where there is high demand for water, or in colder areas where the ambient water temperature is low, two units can be linked together using the Rheem EZ Link® system to supply twice the flow. This system provides staged heating so energy usage corresponds only to the hot water demand.

COMMERCIAL PRODUCTS

Our commercial continuous flow water heater range includes an 82 degree model. From luxury homes to the largest commercial hot water application imaginable, Rheem can deliver to any requirements

For a copy of our Commercial & Industrial Solutions Guide visit www.rheem.co.nz or call 0800 657 336.



New designer colour complements New Zealand's architectural landscape



STEADY, HOT & STRONG

INSTALL A RHEEM™

www.rheem.co.nz

Rheem Gas Continuous Flow Product Data

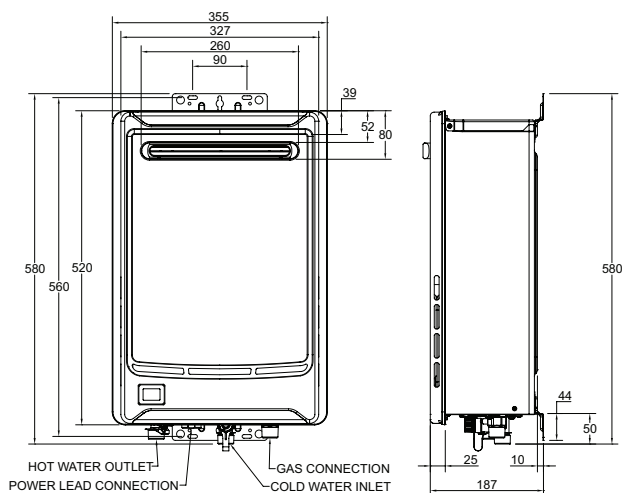
	RHEEM 16	RHEEM 20	RHEEM 24	RHEEM 27	INTERNAL 27*
Model Number - ULPG	874816LFZ	874820LFZ	874824LFZ	874627LPZ	864627LPZ
Model Number - Natural Gas	874816NFZ	874820NFZ	874824NFZ	874627NFZ	864627NFZ
L/min @25°C Rise	16L/min	20L/min	24L/min	27L/min	27L/min
Gas Input Max.	126 MJ/hr	157 MJ/hr	188 MJ/hr	205 MJ/hr	205 MJ/hr
Min. Gas Supply Pressure NG/ULPG	1.13 kPa/ 2.75 kPa				
Water Pressure (kPa) Min-Max	120 – 1000			140 – 1000	
Minimum Flow Rate	2L/min				
Gas Connection	R ¾ / 20	R ¾ / 20	R ¾ / 20	R ¾ / 20	R ¾ / 20
Cold Water Connection	R ¾ / 20	R ¾ / 20	R ¾ / 20	R ¾ / 20	R ¾ / 20
Hot Water Connection	R ¾ / 20	R ¾ / 20	R ¾ / 20	R ¾ / 20	R ¾ / 20
Weight (empty)	16kg	16kg	16kg	23kg	24kg

Accessories

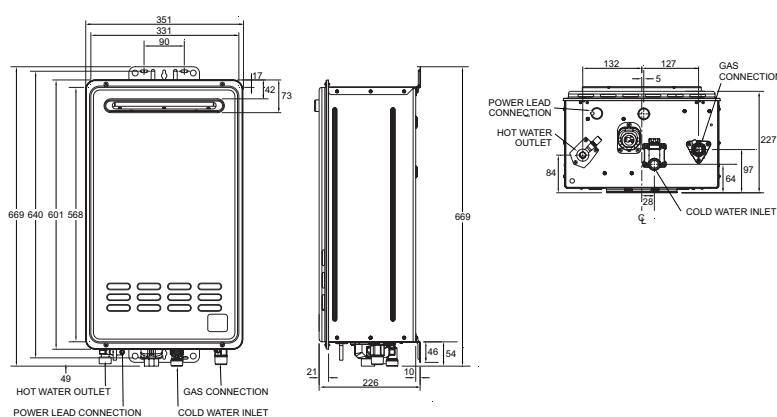
	Part No.
Recess Box - For Rheem 16L, 20L & 24L	318994
Recess Box - For Rheem 27L	320316
Pipe Cover - For Rheem 16L, 20L & 24L	320117
Pipe Cover - For Rheem 27L	320116
EZ Link® Kit	290141
Horizontal Flue Kit Side Exit	318278
Horizontal Flue Kit Rear Exit	318279
Vertical Flue Kit	318280

Temperature Controllers

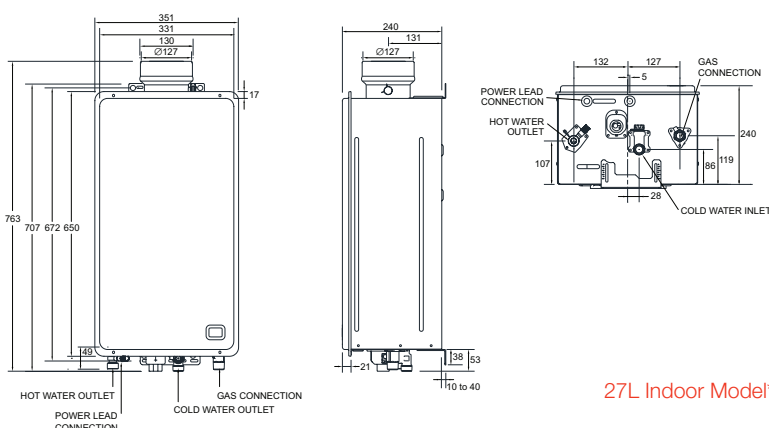
Standard	Part No.	Deluxe	Part No.
Kitchen	A299850	Kitchen	A299861
Bathroom 1	A299851	Bathroom 1	A299862
Bathroom 2	A299852	Bathroom 2	A299863



16L, 20L & 24L
Outdoor Models



27L Outdoor Model



27L Indoor Model*

*A certified Rheem coaxial flue system must be used with all Rheem 27 indoor models. There are three indoor flue kits available:- Horizontal Side Exit, Horizontal Rear Exit and Vertical. Please contact your local plumber, plumbing merchant or Rheem Customer Service on 0800 657 336 to discuss the best solution for your needs. The Rheem flue system uses a twin-pipe design (one pipe inside the other); an inner pipe of stainless steel for exhaust, and an outer steel pipe for inlet air. This flue system can exhaust either through a roof or wall. (Subject to Building Regulations).

Always ensure you use a registered professional for all your plumbing and gasfitting needs.

All specifications contained in this brochure are subject to change without notice. Please check the specifications are current at the time of ordering or building to incorporate the appliance. All information is current at the time of publication (March 2018).

Rheem New Zealand Limited

475 Rosebank Road, Avondale 1026
PO Box 19011, Avondale, Auckland 1746

Freephone 0800 657 336
www.rheem.co.nz