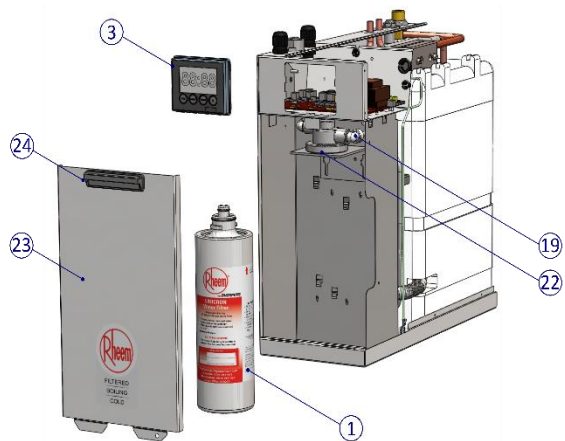
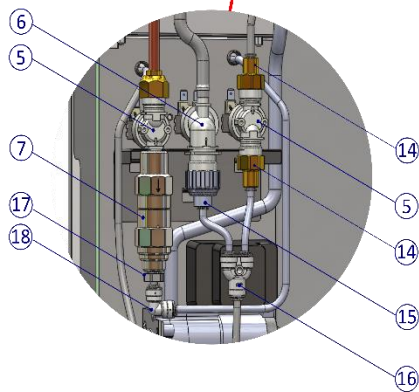


**Manufactured from 01/06/2014**



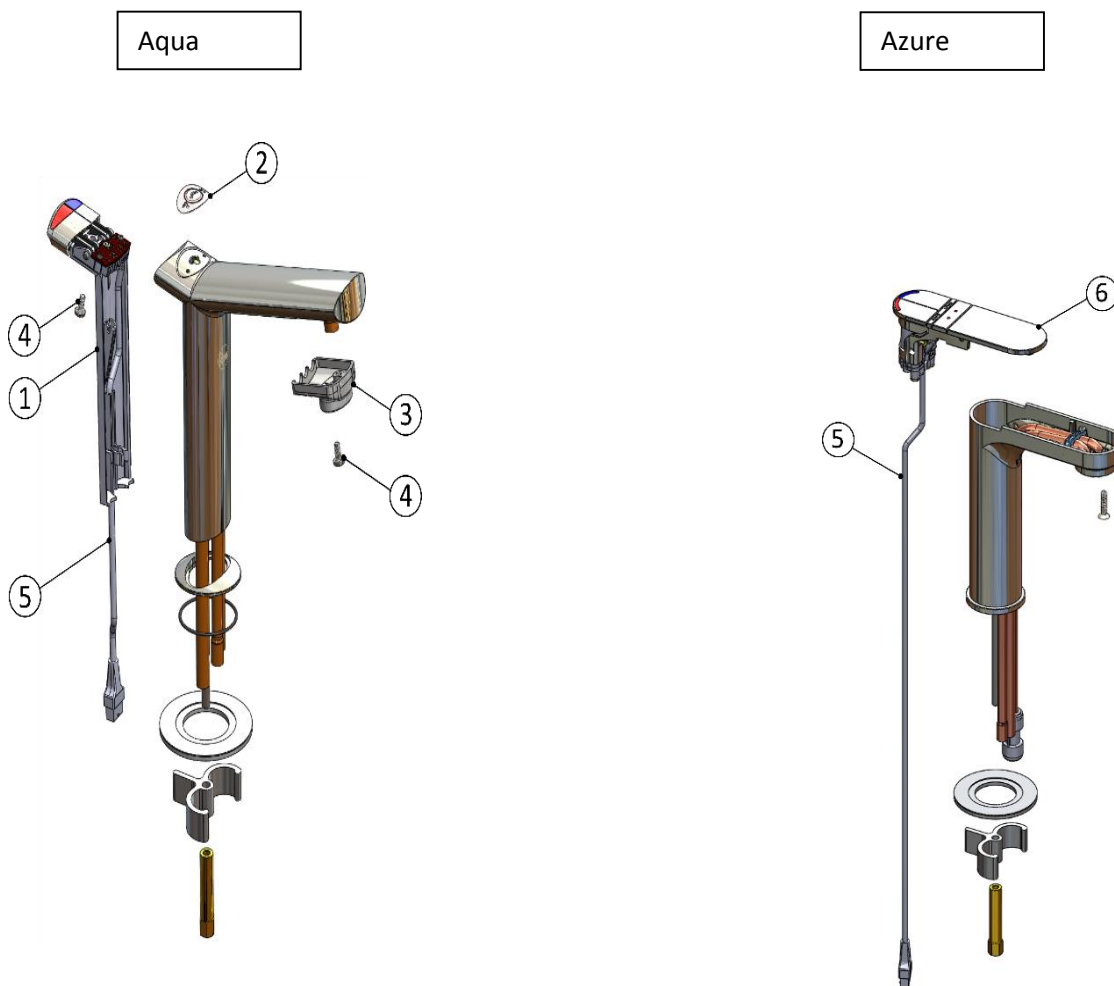
# Rheem Spare Parts Manual

ITEM	PART NO.	DESCRIPTION
1	317067	Filter 5 Micron
2	319037	Controller assembly (PCB)
3	319045	Timer
4	319051	Pump Karlite
7	317647	Valve PLV Apex Filtamate
5	319063	Valve Solenoid 220-240Vac (Inlet & Cold)
6	319062	Valve Solenoid 220-240Vac 0.5L/min (Hot)
7	317164	Element 1.8kW Incoloy
	317346	Element 1.5kW Incoloy
8	012142	Gasket Silicone Pkt5
9	312029	Level Probe
10	319035	Triac Assembly
11	319053	OTC Sensor
12	310537	Thermistor
13	319046	Float Switch
14	317744	Brass fitting ¼" - ½" BSP (J.Guest, Cold/Inlet solenoids)
15	317013	Fitting Inlet Solenoid ¾" BSP to ¼" (John Guest Boiling Solenoid)
16	316810	Fitting "Y" Divider ¼" Tube
17	317654	Stem Adaptor ¼" BSP Grey
18	317655	¼" x ¼" Elbow White Acetal JG
19	316814	Fitting Elbow ¼" to 3/8"
20	317056	Fitting Bulkhead ¼"
21	317087	Fitting Elbow ¼" to ¼" Stem
22	316772	Filter Mount
23	317755	Access Panel
24	316751	Handle Door
NOT SHOWN	319034	Kit, Battery, Timer
	*318749	Loom,cont,8pin short,UB
	318751	Loom, Signal, Internal, Level & Leak,UB
	318473	Wiring Loom 240Vac inc. Toroid
	318688	Restrictor,pump,3.2mm
	316264	Tube Silicone 2.5m x 12mm O/D 8mm I/D
	317101	Tube John Guest White ¼" * 1.31m

\* If installed tap has a short loom (318324) Long tap loom replacement kit 319052 will need to be supplied with 318749

# Rheem Spare Parts Manual

## Exploded View – Rheem Taps



Complete Tap		
319032	Replacement Tap 7430 Series	Aqua
319044	Replacement Tap 7431 Series	Azure

Item	Part No.	Description
1	319031 – 743 Optical - Red PCB	<a href="#">Tap back assembly</a>
1	317795 – 740 Reed Switch – green PCB	<a href="#">Tap back assembly</a>
2	319055	Kit, Label, Switch LED Overlay, Tap
3	317265	Tap nozzle
4	317281	Tap back assembly screw Pan Head Phillips M4 x10 SS.
5	318748	Tap Loom 743 series.
6	319043	Replacement tap head 7431 series
N/S	318330	Loom adapter tap 8pin cont to 6pin u/b

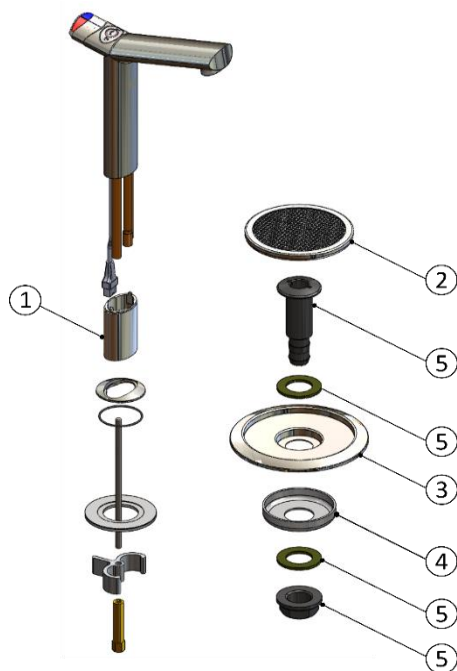
Loom adapter can be used to connect an optical red board tap back to an older 740 series unit.

Unit	Tap	Optical (red PCB)	Reed (green PCB)
743 Series		✓	✗
740 Series		✓ With loom adapter	✓

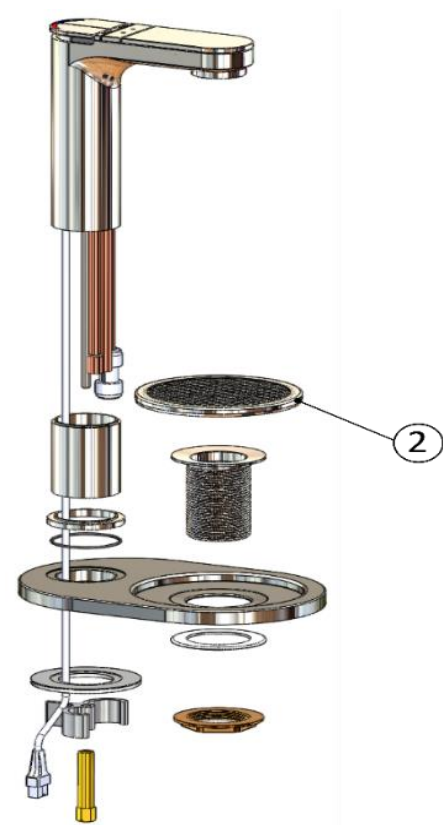
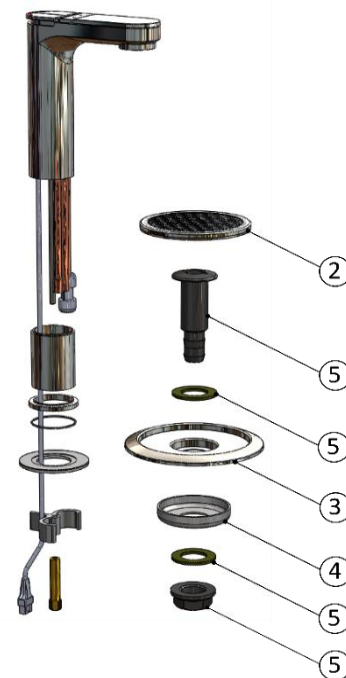
# Rheem Spare Parts Manual

## Exploded View – Rheem Sink Free Kit

Aqua



Azure



### SINK FREE KITS COMPLETE

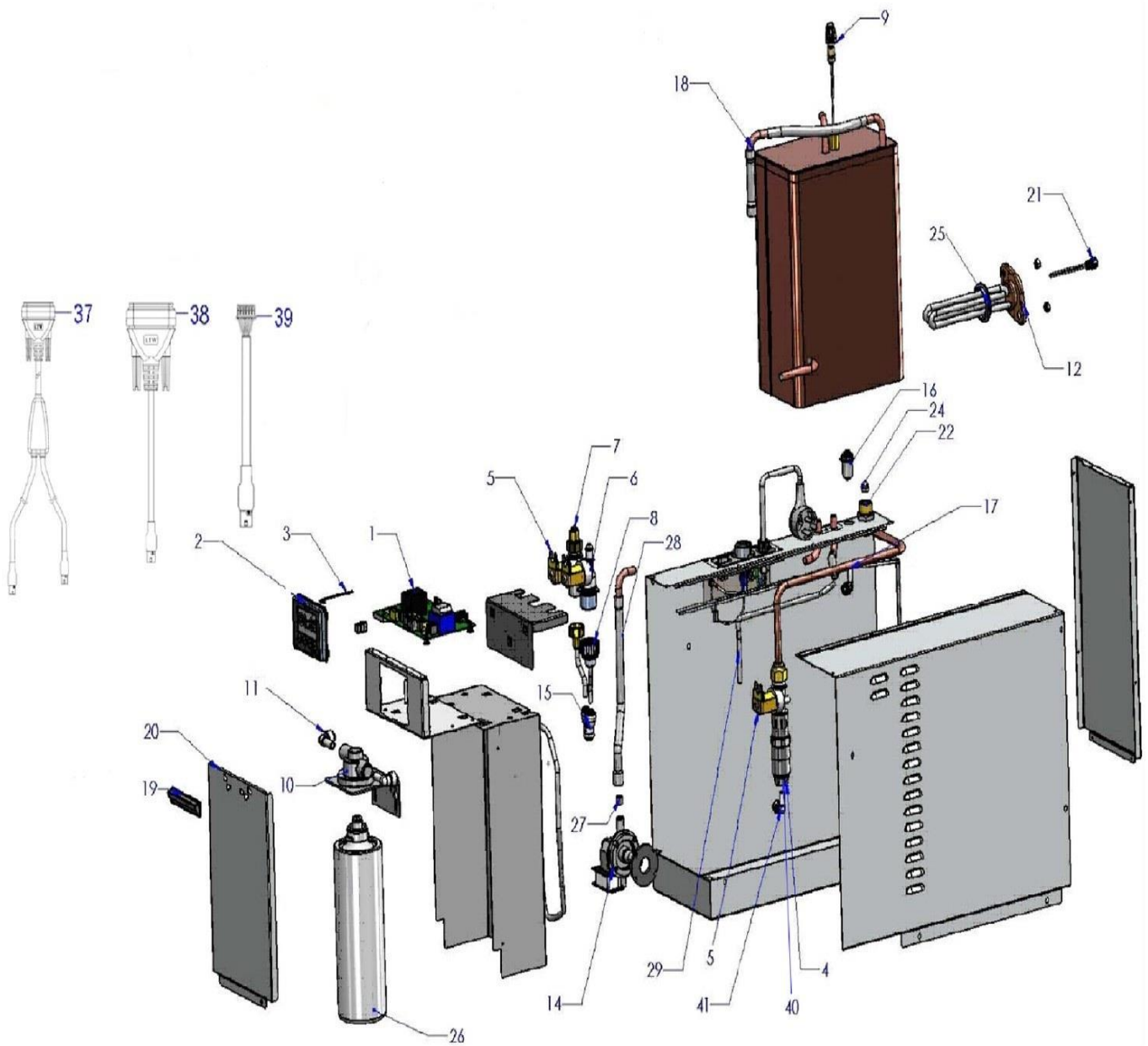
317543	Sink Free Kit 7430 series (Aqua)
319042	sink free kit tap 7431 series (Azure)
319047	sink free kit c/with base plate tap 7431 series (Azure)

Item	Part No.	Description
1	317290	Tap Extension
2	317375	Drain Grate
3	317373	Drain Tray
4	317458	Cup Washer
5	317367	Tank Fitting

**740003/5**

740003PC (Before 23/6/2010) & 740005PC (Before 19/7/2010)

# Rheem Spare Parts Manual



# Rheem Spare Parts Manual

## 740003/5

### 740003PC (Before 23/6/2010) & 740005PC (Before 19/7/2010)

Item	Part No	Description	Item	Part No	Description
1	317345	Control board for all models manufactured after Nov 2009	19	316769	Access panel 3/5 models manufactured before 6/2010
	317717	Controller kit – for models manufactured before Nov 2009		317754	Access panel 3/5 models manufactured after 6/2010
2	317339	Timer assy under sink for all models manufactured after Nov 2009. Otherwise use kit pn 317717	20	316751	Handle door 3/5 all models
			21	310537	Thermistor
3	316955	Ribbon connector timer 3-10L	22	316813	Fitting inlet 740 Srs ½" x 15mm NZ ONLY
4	317647	Valve PLV Apex Brass Filtamate		317177	Fitting inlet 740 Srs ½" x 12mm Au (AUS ONLY)
5	319063	Valve solenoid VAI180-230 (Inlet & Cold)	24	10470	Filter inlet 15mm
6	319062	Valve solenoid 220-240Vac 0.5L/min (Hot)	25	012142	Gasket silicone Pkt 5
7	317744	Brass fitting ¼" to ½" BSP (J.Guest, cold/inlet solenoids)	26	317067	Filter Everpure 5 micron
8	317013	Fitting inlet solenoid (¾" BSP to ¼" John Guest boiling solenoid)	27	317317	Restrictor flow outlet 740/750 Series
9	312029	Level probe	28	316264	Tube silicone 2.5m 2.5m x 12mm O/D 8mm I/D
10	316772	Filter Mount Everpure	29	317101	Tube John Guest white ¼" * 2.54m straight
11	316814	Fitting elbow ¼" to 3/8"	30		
12	317164	Element 1.8kW Incoloy (5 Litre)	31		
	317346	Element 1.5kW Incoloy (3 Litre)	32	317795	Tap back assembly – Reed Switch
13	318075	Float switch	33		
14	319051	<b>Pump Karlite</b> :-For 740003PC units manufactured AFTER 23.6.10 to present and 740005PC units manufactured AFTER 19.7.10 to present	37	317499	Wiring loom adaptor BWU to tap & chiller
			38	317949	Wiring loom adaptor BWU to chiller
			39	317689	Tap loom 740 series
	318226	<b>Pump Karlite Kit</b> :-For 740003PC units manufactured BEFORE 23.6.10 and 740005PC units manufactured BEFORE 19.7.10 - present	40	317654	Stem adaptor ¼" BSP grey
15	316810	Fitting "Y" divider ¼" tube	41	317655	J. Guest ¼ x ¼ Elbow White
16	317056	Fitting bulkhead ¼"			
17	317087	Fitting elbow ¼" to ¼" stem	N/S	319036	HW Flow restrictor kit. 3x Brass inserts
				318138	Replacement Fuse 100mA for float sw

# Rheem Spare Parts Manual

## 740003/5

740003PC (After 23/6/2010) & 740005PC (After 19/7/2010)

Item	Part No	Description	Item	Part No	Description
1	317345	Control board for all models manufactured after Nov 2009	16	317056	Fitting bulkhead ¼"
	317717	Controller kit – for models manufactured before Nov 2009	17	317087	Fitting elbow ¼" to ¼" stem
2	317339	Timer Assy Under sink for all models manufactured after Nov 2009. Otherwise use kit pn 317717	19	316769	Access panel 3/5 models manufactured before 6/2010
3	316955	Ribbon connector timer 3-10L	20	316751	Handle Door 3/5 all models
4	317647	Valve PLV Apex brass Filtamate	21	310537	Thermistor
5	319063	Valve solenoid VAI180-230 (Inlet & Cold)	22	316813	Fitting Inlet 740 Srs ½" x 15mm NZ ONLY
6	319062	Valve solenoid 220-240Vac 0.5L/min (Hot)		317177	Fitting Inlet 740 Srs ½" x 12mm Au (AUS ONLY)
7	317744	Brass Fitting ¼" to ½" BSP (J.Guest, cold/inlet solenoids)	24	10470	Filter inlet 15mm
			25	012142	Gasket silicone Pkt 5
8	317013	Fitting inlet solenoid (¾" BSP to ¼" John Guest boiling solenoid)	26	317067	Filter Everpure 5 micron
9	312029	Level probe	27	317317	Restrictor flow outlet 740/750 series
10	316772	Filter mount Everpure	28	316264	Tube silicone 2.5m Tube Silicone 2.5m x 12mm O/D 8mm I/D
11	316814	Fitting elbow ¼" to 3/8"	29	317101	Tube John Guest white ¼" * 2.54m straight
12	317164	Element 1.8kW Incoloy (5 Litre)			
	317346	Element 1.5kW Incoloy (3 Litre)			
13	318075	Float Switch		317795	Tap back assembly
14	319051	<b>Pump Karlite</b> :-For 740003PC units manufactured AFTER 23.6.10 to present and 740005PC units manufactured AFTER 19.7.10 to present			
			39	317689	Tap loom 740 series
	318226	<b>Pump Karlite Kit</b> :-For 740003PC units manufactured BEFORE 23.6 10 and 740005PC units manufactured BEFORE 19.7.10 - present	40	317654	Stem adaptor ¼" BSP grey
			41	317655	J. Guest ¼ x ¼ Elbow White
				317690	Wiring loom BWU to tap & chiller (includes gland nut)
15	316810	Fitting "Y" divider ¼" tube	N/S	319036	HW Flow restrictor kit - 3x Brass inserts
				318138	Replacement Fuse 100mA for float sw