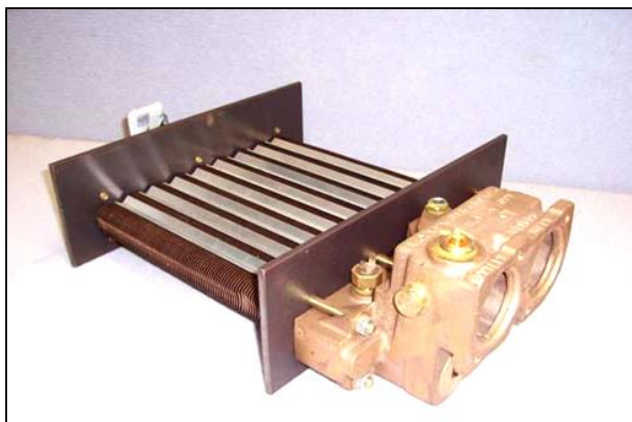


Rheem Spare Parts Manual



RP2100 bronze heat exchanger (pool)



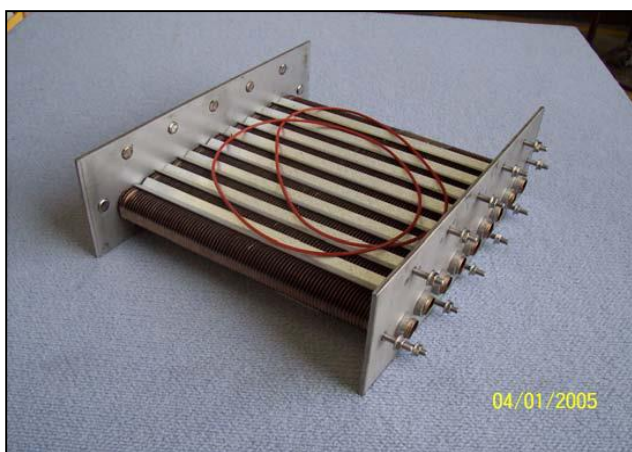
| Model | Copper/Nickel |
|-------|---------------|
| 197 | 56065248 |
| 277 | 56065254 |
| 347 | 56076848 |
| 427 | 56076846 |

capron heat exchanger (pool)



| Copper | Model | Copper/Nickel |
|----------|-------|---------------|
| 56066821 | 197 | 56066825 |
| 56066822 | 277 | 56066826 |
| 56066823 | 347 | 56066827 |
| 56066824 | 427 | 56066828 |

RP2100 Capron tube bundle (pool)



Header bolt torque settings 25-30Nm

| Copper | Model | Copper/Nickel |
|----------|-------|---------------|
| 56066858 | 197 | 56066862 |
| 56066859 | 277 | 56066863 |
| 56066860 | 347 | 56066864 |
| 56066861 | 427 | 56066857 |

Note: Capron tube bundles include 2 header O-rings part 56800360.

Rheem Spare Parts Manual

Gemini heat exchanger (pool)



| Model | Copper |
|-------------|----------|
| 183/195/196 | 56002446 |
| 263/275 | 56002447 |
| 333/345 | 56002448 |
| 403/425 | 56002449 |

Universal tube bundle (pool & boiler)



| Copper | Model | Copper/Nickel |
|----------|---------|---------------|
| 56004671 | 195/196 | 56005260 |
| 56004672 | 275/276 | 56005261 |
| 56004673 | 345/346 | 56005262 |
| 56004674 | 425/426 | 56005264 |
| 56065243 | 197 | 56065248 |
| 56065244 | 277 | 56065254 |
| 56065245 | 347 | 56065258 |
| 56065246 | 427 | 56005263 |

Tube bundle (boiler)



| Model | Copper |
|----------|----------|
| 109 | 56069879 |
| See Note | 56069000 |

Note: Some 109 boilers have corner studs in the plates; in this situation part 56069000 is used.

Rheem Spare Parts Manual

Tube bundle (pool)



| Copper | Model | Copper/Nickel |
|----------|-------|---------------|
| 56069000 | 103 | 56069001 |
| | 109 | |
| | 110 | |
| | 127 | |

Tube bundle (boiler)



| Model | Copper |
|-------|----------|
| 147 | 56059508 |

Tube bundle (pool)



| Copper | Model | Copper/Nickel |
|----------|-------|---------------|
| 56053231 | 153 | 56053232 |
| | 159 | |
| | 160 | |
| | 167 | |

Rheem Spare Parts Manual

Versa/Optimum heat exchangers (pool)



| Model | Copper |
|--------------|----------|
| 195/196/197 | 56065257 |
| 275//276/277 | 56065261 |
| 345/346/347 | 56065265 |
| 425/426/427 | 56065269 |
| 196 | 56004052 |
| 276 | 56003756 |
| 346 | 56003757 |
| 426 | 56003758 |

Tube bundle (boiler)



| Model | Copper |
|-------|----------|
| 197 | 56065251 |
| 277 | 56065252 |
| 347 | 56065253 |
| 427 | 56065326 |

Bronze headers Versa/Optimum (pool)



| Model | In/outlet |
|-----------|---------------------|
| 196 - 426 | 56350858 |
| 197 - 427 | 56350858 |
| | Return (RHS) |
| All | 56350634 |

Rheem Spare Parts Manual

Bronze headers (pool)



| Model | In/outlet (LHS) |
|-----------|-----------------|
| 195 - 425 | 56350631 |
| | Return (RHS) |
| All | 56391634 |

Note: Return header pre-drilled for a hi-limit Thermostat part 56600893.

Bronze headers (spa heater)



| Model | In/outlet (LHS) |
|-----------|-----------------|
| 103 - 167 | 56058253 |
| | Return (RHS) |
| All | 56058254 |

RP2100 Capron headers



| Model | In/outlet (LHS) |
|-----------|-----------------|
| 197 | 56112801 |
| 277 | 56112701 |
| 347 - 427 | 56112601 |
| | Return (RHS) |
| All | 56800357 |

Rheem Spare Parts Manual

Capron header (pool)



| Model | In/outlet |
|------------------|-----------|
| P0131 Spartan | 56320495 |
| See Note | Return |

Note: There is no return header for the Spartan model it is integral to the tube bundle.

Bronze headers (boiler)



| Model | In/outlet (LHS) | Return (RHS) |
|-------|-----------------|--------------|
| 109 | 56070149 | 56359065 |

Bronze headers 4 pass (boiler)



| Bronze | Model 147 | Cast Iron |
|----------|-----------------|-----------|
| 56059586 | In/outlet (LHS) | 56053546 |
| 56350723 | Return (RHS) | 56350721 |

Rheem Spare Parts Manual

Bronze headers 4 pass (boiler)



| Models | In/outlet (LHS) | Return (RHS) |
|-----------|-----------------|--------------|
| 195 - 426 | 56350646 | 56350634 |

Note: Order return with 1/8" BSP brass plug part 56500719.

Bronze headers series 2/8 (boiler)



| Models | In/outlet (LHS) | Return (RHS) |
|------------|-----------------|--------------|
| 538 - 1922 | 56350648 | 56350603 |

Flange plates (cast iron)



| Models | Size | Cast iron | Gasket |
|---|------|-----------|-----------|
| (LHS) 2 - 8 | 50mm | 56350465 | *56800080 |
| (RHST) Gemini | 40mm | 56350746 | *56800217 |
| (RHSTB) Versa/ Optimum RP2100 Bronze Header | 50mm | 56350872 | *56800080 |

* 56800080 & 56800217 sold in pairs
Versa gaskets available in 40mm or 50mm
Use 56800217 if 40mm gasket is required

Rheem Spare Parts Manual

Tube bundle and flange gaskets

| Top row | Red 5/8" flat | Red 1" bevel | Black 5/8" flat | Black 1" flat |
|-----------------|---------------|--------------|-----------------------|---------------|
| (Left to right) | 56800203 | 56800001 | Obsolete use 56800203 | 56800086 |



| Bottom row | 40mm Gemini | 40mm Versa | 50mm RP2100 |
|-----------------|----------------|----------------|----------------|
| (Left to right) | 56800013 (x 1) | 56800217 (x 2) | 56800080 (x 2) |

Header gaskets



| Models | Gasket |
|--------------------|----------|
| 103 – 127 (Top) | 56810301 |
| 153 – 167 (Bottom) | 56800075 |

Capron header connector kits



| Models | Nut, tail & O-ring |
|---------------|--------------------|
| RP2100 (LHS) | 56076847 |
| Spartan (RHS) | 56320494 |

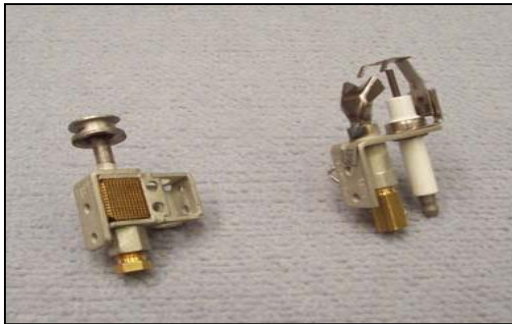
Rheem Spare Parts Manual

Pressure switch pool & spa heaters



| Models | Switch |
|--|----------|
| (LHS) Gemini Versa Optimum Spa temp Bronze headers | 56600025 |
| (RHS) RP2100 Spartan Capron headers | 56651284 |

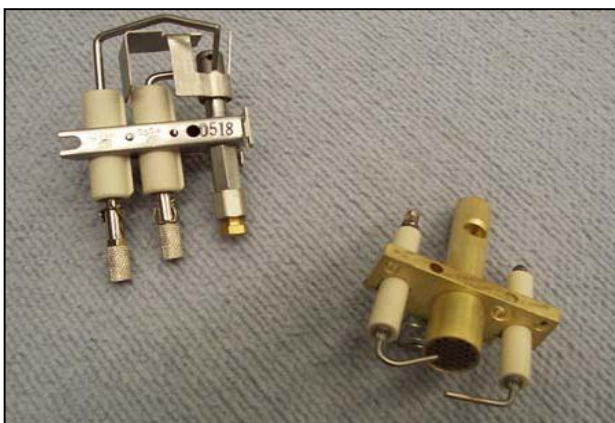
Pilots (standing) and electronic ignition



| (LHS) | (RHS) |
|-------------------------|-----------------------------|
| Standing pilot Q324A | Electronic ignition Q345 |
| 56600497 | 56609174 |

Note: Q345 pilot replaces obsolete Q373.

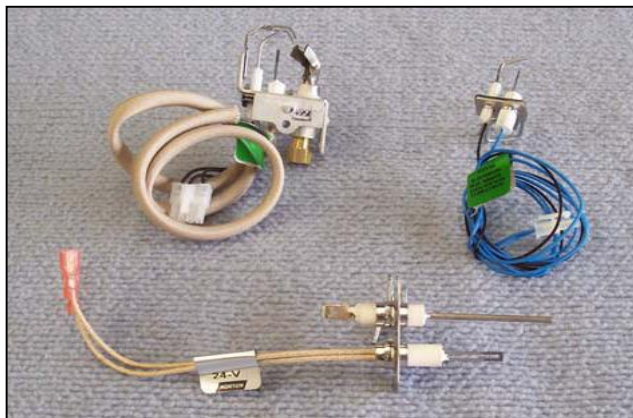
Pilots (intermittent) electronic ignition



| (LHS) | (RHS) |
|-------------------------------------|--------------------------------|
| Electronic ignition Honeywell | Electronic ignition Siemens |
| 56600728 | 56609125 |

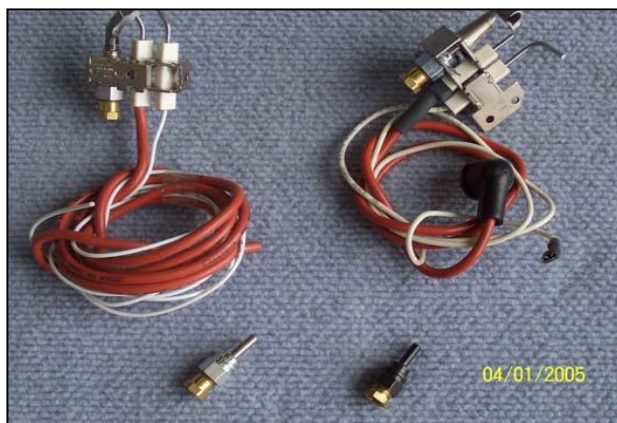
Rheem Spare Parts Manual

Pilots (H.S.I.) hot surface ignition



| | | |
|------------------------|--|----------|
| (LHS) | H.S.I. Honeywell comes with NG injector (Suits Smart valve 56609198) | |
| 56609199 | | |
| (RHS) | H.S.I. ignition assembly | |
| 56609225 | Pilot refill for part 56609199 | |
| (Bottom) | Norton H.S.I. | |
| 56659144 | Suits W/Rodgers gas valve | |
| Honeywell Pilot | LPG injector BCR14 | 56600812 |
| | NG injector BCR 20 | 56600811 |

Pilots (E.I.) electronic ignition



| | | |
|------------------------|-------------|--------------|
| Top row | E49 PILOT | E48 PILOT |
| (Left to right) | 56609038 | 56609027 |
| (Bottom row) | NG injector | LPG injector |
| (Left to right) | 56600148 | 56609037 |

Unatherm governors



| | | | |
|------------------------|---------------|----------|----------|
| Models | Versa/Optimum | 103/167 | RP2100 |
| (Left to right) | 56600885 | 56069775 | 56600572 |

Note: The Unatherm governor shown on right (56600572) is no longer available and has been replaced with a brass disc. This disc is available using original part no. 56600572.

Rheem Spare Parts Manual

Unatherm governors



| (LHS) | (RHS) |
|-----------------------|------------------------|
| E-type suit Gemini | H-type suit series 2/8 |
| 56051492 | 56053675 |

Hi limit thermostats (pool)



| Model | Capron headers 60°C auto reset | Bronze headers 60°C | Spartan heaters 60°C auto reset |
|--------------------|---|---------------------------|--|
| (Left to right) | 56601549 | 56600893 | 56601547 |
| N/S | Sensor Probe & Hi Limit Locator 3/8 NPT, Suits Spartan 56659206 | | |
| | T/Stat Hi Limit A/Reset 45°C M4 base 56600188 | | |

Hi limit thermostats (boiler)



| (LHS) | (RHS) |
|--|-----------------------|
| Siemens thermostat 80-100°C RAK-ST.1430S | Fantini thermostat |
| 56600185 | 56600183 |
| Siemens thermostat 15-95°C RAK 112.1020 | |
| 56609162 | |

Rheem Spare Parts Manual

Hi limit thermostats (boiler)



| (LHS) | (RHS) |
|-------------------------|------------------|
| W/Rodgers WR11B58.28 | Honeywell L6188C |
| 56609227 | 56609000 |

Flow Switches



| | |
|---|--|
| 50mm flow switch kit includes switch, relay, base, screws and diagram. | 40mm flow switch kit is now obsolete use 50mm kit with altered pipe work. |
| 56009223 | OBSOLETE |

Flow switch (boiler)



| (LHS) Caleffi flow switch 25mm | (MIDDLE) Fantini flow switch 25mm | (RHS) Watts flow switch 34/58/89mm |
|--------------------------------------|---|--|
| 56609224 | OBSOLETE use 56609204 | 56609204 |

Rheem Spare Parts Manual

Gas valves Honeywell

NOTE: E.I. = Electronic Ignition



Left to Right

| | |
|----------|--------------------------------|
| 56609116 | E.I. VR8304H 4800 |
| 56609115 | S.P. VR8300H 4808 |
| 56609198 | H.S.I. SV9605H (Smart Valve) |
| 56609048 | SV9605H Smart Valve LPG spring |
| 56609051 | SV9605H Smart Valve NG spring |

S.P. = Standing Pilot

H.S.I. = Hot Surface Ignition



56600862 Gas Valve 20mm Millivolt
VS820 (Plus technical bulletin)

(LPG Conversion Kit Available)

NOTE: VS820 Replaces old VS891.
Refer technical bulletin included with each
valve.

Gas valves White Rodgers



Left

56609116 Gas Valve E.I. WR 36C68C
(Plus technical bulletin) Replaces Obsolete
Honeywell VR8304H

Right

56609115 Gas Valve 24V WR 36C03C
(Plus technical bulletin)



Left

56609217 Hi/Lo Gas Valve
Replacement for 36CE20

Right

56609218 On/Off Gas Valve

Rheem Spare Parts Manual

Gas valves Robertshaw



| | |
|-------------------------------|--------------------|
| Left | |
| 56609131 | 20mm EI MM NG |
| (7000BDSTRD – 1 – S7C) | |
| 56609132 | 20mm EI MM LPG |
| (7000BDSTRDLP – 1 – S7C) | |
| Middle | |
| 56600991 | 25mm EI NG |
| (7000DERHC – S7C) | |
| 56600997 | LPG Conversion Kit |
| Right | |
| 56609133 | 25mm EI MM NG |
| (7000DSTRDHHC – 1 – S7C) | |
| 56609134 | 25mm EI MM LPG |
| (7000DSTRDHHC – LP – 1 – S7C) | |

Thermostatic gas valves Honeywell



| | |
|---|---------------|
| Left | |
| 56600005 | 15mm Modusnap |
| Right | |
| 56600514 | 25mm Modusnap |
| NOTE: Above Modusnaps are now obsolete due to the manufacturer ceasing production | |

Rheem Spare Parts Manual

Actuator gas valves Siemens

(Landis & Staefa / Landis & Gyr)



| | |
|--------------|----------------------|
| Left | |
| 56609003 | Siemens SKP10.110B27 |
| Right | |
| 56609002 | Siemens SKP10.123A27 |



| | |
|----------|----------------------|
| 56609001 | Siemens SKP20.110B27 |
|----------|----------------------|

(Landis & Staefa / Landis & Gyr)



| | |
|--------|----------------|
| 890376 | Siemens SKP15. |
|--------|----------------|

Rheem Spare Parts Manual

Actuator gas valves Siemens



| | |
|----------|----------------------|
| 56609237 | Siemens SKP27.111B27 |
|----------|----------------------|

Actuator gas valves (Honeywell)



| | |
|----------|-------------------------------|
| 56600449 | V9055A 1105 Fluid Power Valve |
|----------|-------------------------------|

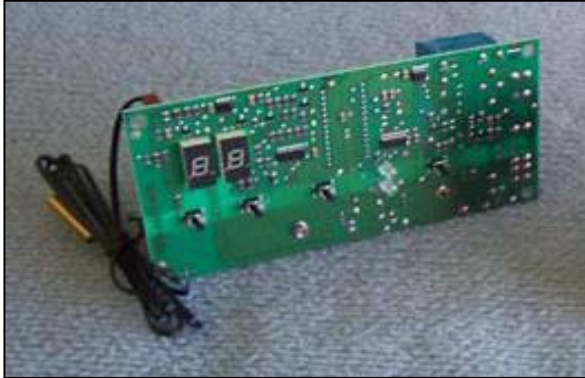


| | |
|----------|----------------------------|
| 56600458 | V4062A suit B3 application |
|----------|----------------------------|

| | |
|------------------------------------|-------------------------|
| Must be modified for B3 (pictured) | |
| 56600193 | V4055B 1096 suit On/Off |

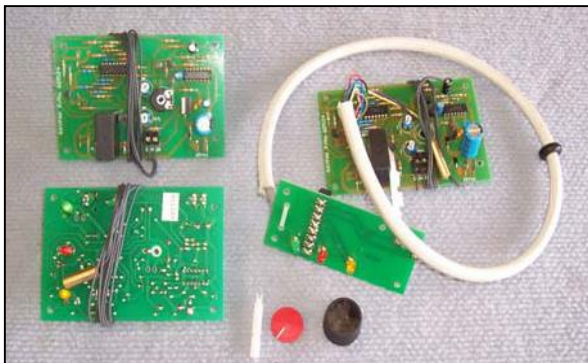
Rheem Spare Parts Manual

Thermostats RP2100 Series



| | | |
|-----|---|----------|
| | T/stat PCB and sensor | 56609184 |
| | Remote T/stat PCB only | 56609185 |
| | Brass sensor only | 56609186 |
| N/S | Grey thermostat Pcb Only | 56659197 |
| N/S | Black Thermostat Should have instruction TB15-009 | 56PE5001 |
| N/S | Red decal for RP2100 | 56909063 |
| N/S | Stainless Sensor Probe (suits PCB'S 56659197 & 56PE5001) | 56659202 |

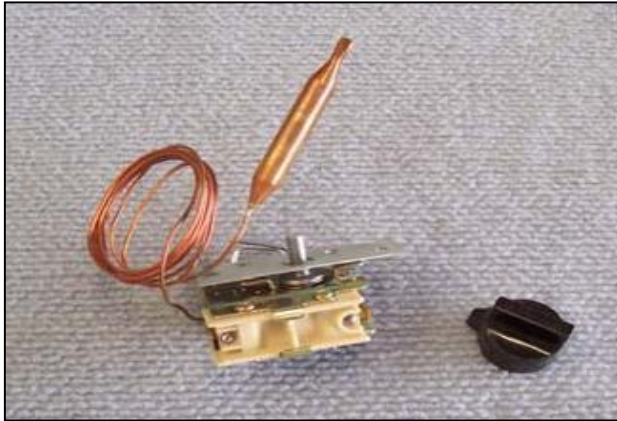
Thermostats (various)



| | | |
|--------------------------------|----------------------------|----------|
| (LHS) Top and bottom | Optimum PCB and sensor | 56609124 |
| (RHS) Top | Spa temp PCB 60/110/160 | 56609137 |
| (RHS) Bottom left | Shaft | 56809036 |
| Bottom middle | Knob insert | 56809035 |
| Bottom right | Knob black | 56809032 |

Rheem Spare Parts Manual

Thermostat mechanical (pool)

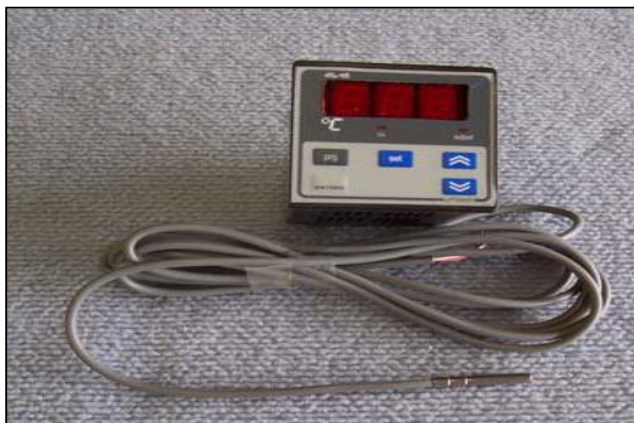


| Model | (LHS) | (RHS) |
|--------|----------|----------|
| Gemini | T/stat | Knob |
| | 56600827 | 56800201 |

Note; Suits millivolt gas valves.

Rheem Spare Parts Manual

Thermostat (boiler) Eliwell



| | |
|--|--------------------------|
| See TB11 006 - Use Eliwell Kit | |
| | LAE Replacement |
| | AKO Replacement |
| 890279 | Eliwell IC902 Controller |
| 890555 | Raypak Sensor – 1 Probe |
| 890280 | HSI Sensor – 2 Probes |

Thermostat (boiler) Honeywell



| (LHS) | (LHS) | (RHS) |
|------------|------------|------------|
| T991E-1018 | T991E-1034 | L4008A |
| 56600524 | 56609114 | 56600022 |
| 71 - 127°C | 13 - 79°C | 38 - 116°C |

Note: 56600524 & 56609114 are associated with Honeywell Actuator Fluid Power Valves.

Hi limit thermostats (boiler)



| (LHS) | (RHS) |
|-------------------------|------------------|
| W/Rodgers WR11B58.28 | Honeywell L6188C |
| 56609227 | 56609000 |

Rheem Spare Parts Manual

Ignition modules



| (LHS) | (BOTTOM) | (RHS) |
|-----------------|-------------|-------------|
| RAM H4M7 24V | H/well S86H | Brahma CM32 |
| 56601004 | See note | 56609222 |

Note; Honeywell S86H superseded by Fenwal S8635-63 No.890684

RAM H4M7 valve used in 131 Spartan

| | |
|-------------------------|------------------------|
| N/S - Ignition HT Cable | 56659057 - Discontinue |
|-------------------------|------------------------|

Ignition controls



| (LHS) | (RHS) |
|-------------------------|-------------------------|
| Siemens LGB41.255A27 | Siemens LGA41.153A27 |
| 56609154 | 56609094 |

Ignition relay



| Model | Brahma RE3 | 56609177 |
|-------|------------|----------|
|-------|------------|----------|

Rheem Spare Parts Manual

Flame monitor



| | | |
|-------|------------------|----------|
| Model | Siemens LFE10 | 56609175 |
|-------|------------------|----------|



| (TOP) | (BOTTOM) |
|------------------------------|-----------------------------|
| Techrite COD1820 56659043 | Siemens QO31A27 56659088 |

Modulation control (Siemens RWF40)

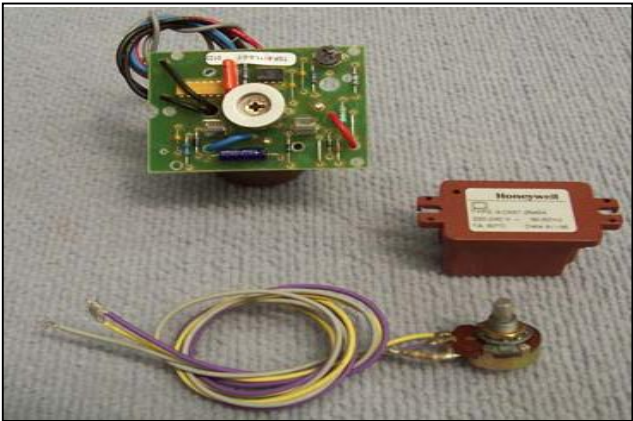


| (LHS) | (RHS) |
|-----------------------|---------------------|
| Modulation controller | Modulation actuator |
| 56609233 | 56609238 |
| (N/S) | (N/S) |
| Sensor only | Cable only |
| 56609234 | 56659058 |

| (Top) | (Bottom) |
|----------------|------------|
| PEM Controller | PEM Sensor |
| 56609151 | 56609147 |

Rheem Spare Parts Manual

Packaged equipment module (PEM)



| (Top) | (Middle) | (Bottom) |
|-------------|-------------|---------------|
| Transmitter | Transformer | Potentiometer |
| 56609155 | 56659090 | 56070110 |

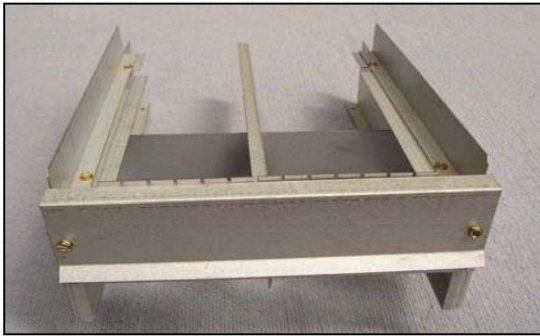
Expansion tanks



| | |
|-----|----------|
| 8L | 56959053 |
| 12L | 56959054 |
| 18L | 56959055 |
| 24L | 56959069 |
| 35L | 56959056 |
| 50L | 56959057 |

Rheem Spare Parts Manual

Burner tray sheet metal



| | |
|---------------------------|----------|
| Models 183/195/196 | 56069203 |
| 263/275/276 | 56069204 |
| 333/345/346 | 56069205 |
| 403/425/426 | 56069206 |



| | |
|---------------------------|----------|
| Models 109/110/127 | 56069201 |
|---------------------------|----------|



| | |
|-------------------------------|----------|
| Models 147/157/160/167 | 56053235 |
|-------------------------------|----------|



| | |
|------------------|----------|
| Model 197 | 56065156 |
| 247 | 56065157 |
| 347 | 56065158 |
| 427 | 56065159 |

Rheem Spare Parts Manual

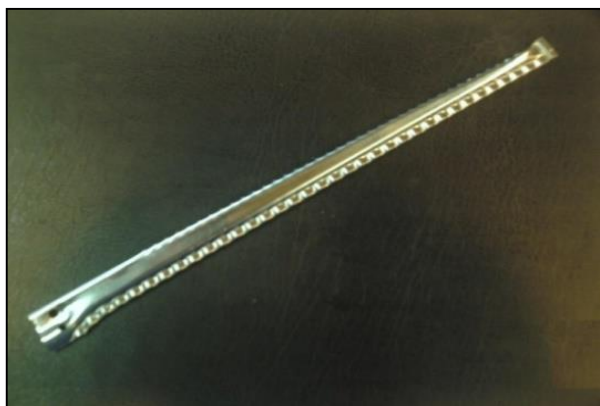
Pressure Relief Valve



| | | |
|---------|----------|----------|
| 60 PSI | 1.1 MBTU | 56500222 |
| 60 PSI | 2.2 MBTU | 56500269 |
| 100 PSI | 0.5 MBTU | 56609123 |
| 125 PSI | 0.5 MBTU | 56609121 |
| 125 PSI | 0.2 MBTU | 56500648 |
| 125 PSI | 1.7 MBTU | 56500038 |
| 125 PSI | 2.0 MBTU | 56500241 |
| 125 PSI | 3.2 MBTU | 56500242 |

Note: Generic picture shown, items 56609123 and 56609121 are TPRV's

Burner Bar



| | |
|----------------|----------|
| S/Steel burner | 56301210 |
|----------------|----------|

Note: suits all

Burner Jet



| | | |
|--------|-----------|----------|
| 1.05mm | 1/16" NPT | 56350350 |
| 1.10mm | 1/16" NPT | 56350083 |
| 1.85mm | 1/16" NPT | 56350078 |
| 1.90mm | 1/16" NPT | 56350576 |
| 1.95mm | 1/16" NPT | 56350077 |
| 2.00mm | 1/16" NPT | 56350346 |
| 4.50mm | 1/4" NPT | 56350785 |

Note: Generic picture shown.