



RHEEM® PREMIER SOLAR



*Put the Sun to work with
Rheem Solar water heating*

- SAVES UP TO 70% OF HOT WATER ENERGY CONSUMPTION
- TOTAL "DRAIN BACK" FROST AND OVERHEAT PROTECTION
- REDUCES GREENHOUSE GAS EMISSIONS
- "SPLIT SYSTEM" WITH GROUND MOUNTED CYLINDER
- ELECTRIC OR GAS BOOSTED OPTIONS
- COMPLIES WITH BUILDING CODE
- ROBUST HIGH EFFICIENCY COLLECTORS

INSTALL

A RHEEM®

rheem.co.nz



RHEEM® PREMIER SOLAR

Split System Solar water heating ensures good looks and seamless performance

Rheem Premier Solar is an indirect solar water heater specifically designed for a wide range of environments, from frost prone to areas of high solar radiation and suitable for most water qualities. Rheem Premier Solar also has built in full diagnostic display. Slimline collectors are mounted on the roof while the 270L solar storage cylinder is located at ground level. This provides a clean look for today's modern homes and at the same time keeps roof loading to a minimum.

The system combines revolutionary drain back heat exchange technology in a durable vitreous enamel lined mains pressure cylinder. Fluid drains out of the collectors to prevent freezing in cold conditions and superheating when the sun is at its strongest.

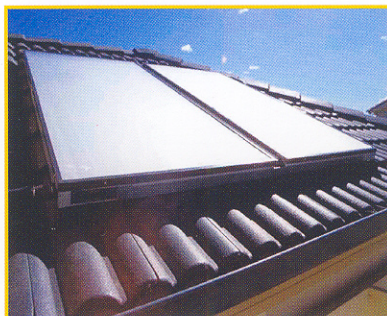
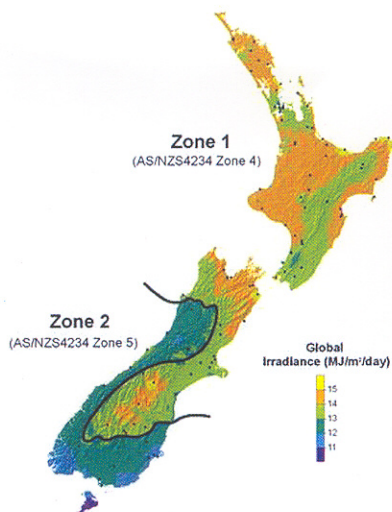
The fully integrated system of cylinder, electronic controls and sensing of the collectors, ensures the available energy is used in the most effective way.

Combined with Rheem high efficiency, multi riser collectors, this system can cut water heating energy consumption by up to 70%. Overall this means lower costs and a reduced carbon footprint whilst cutting Greenhouse Gas Emissions (GCEs)

Booster Options

Rheem Premier Solar is available in both electric and gas boosted models, providing hot water all year round regardless of the weather. Gas models utilise a Rheem Integrity continuous flow gas water heater for boosting, which is remote mounted. Electric models are available with a 3.6kW back – up heating element.

AS/NZS4234 Climate Zones



RHEEM PREMIER SOLAR SPECIFICATIONS

Models	
Electric / 2 Collectors	A591270/2T
Electric / 3 Collectors	A591270/3T
Gas / 2 Collectors	A591270/2TG
Gas / 3 Collectors	A591270/3TG
Storage Capacity	270 Litres
Roof Space Required	
– 2 Collector	2.4m x 2.0m
– 3 Collector	3.6m x 2.0m
Dimensions – Cylinder	H1755mm x W650mm x D860mm
Weight Empty – Cylinder	147kg
Weight Empty – Collector	48kg
Temperature Pressure Relief Valve Setting	1000kPa
Expansion Control Valve (ECV) Setting	850kPa
Minimum Supply Pressure	150kPa (Gas boosted only)
Water Connections	
- Inlet	¾ /20 BSPF
- Outlet Tempered	¾ /20 BSPF
- Gas	¾ /20 BSPM
- Solar Flow and Return	½ /15 BSPM

Sizing Guide	Zone	People	
Boosting Type		Gas	Electric
Moderate Climate	1	2-6	1-3
Cold Climate	2	2-5	1-3

BOOST SPECIFICATIONS

Electric	3.6Kw
- Boost Capacity	135 Litres
Gas Input (NG and LPG)	199 MJ / hr
- Boost Capacity	26 l / min

PREMIER SOLAR WARRANTY*

Warranty details: 7/3/1, 7 years cylinder and collectors, 3 years labour on cylinder, 1 year parts including labour; applies to a single family domestic dwelling only.

All other applications have a 3/1/1, 3 years cylinder and collectors, 1 year parts, 1 year labour.



RHEEM NEW ZEALAND LIMITED • rheem.co.nz • Sales 0800 657 336

Savings of 70% are based on Australian Government approved TRNSYS simulation modelling. Savings and incentives will vary depending upon your location, type of system installed type of water heater being replaced, hot water consumption and fuel tariff. Expansion Control Valve (ECV) not supplied with water heater. Low watts density elements are available for hard water areas and incoloy elements are available for corrosive water areas. Material and specifications are subject to change without notice. This system is suitable for outdoor installation. This system is suitable for frost regions.

*Registered trademark of Rheem New Zealand Limited. Date of printing June 2007

INSTALL

A RHEEM®

