

STORAGE VOLUME: – 270 LITRES

BOOST VOLUME: – 160 LITRES

HOT WATER CONNECTION: – $RP\frac{3}{4}/20$.

COLD WATER CONNECTION: – $RP\frac{3}{4}/20$.

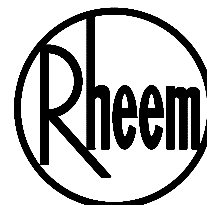
SOLAR HOT (FROM COLLECTOR) CONNECTION: – DN15 COMPRESSION FITTING.
(SOLAR HOT WATER INLET TO TANK: $RP\frac{3}{4}/20$).

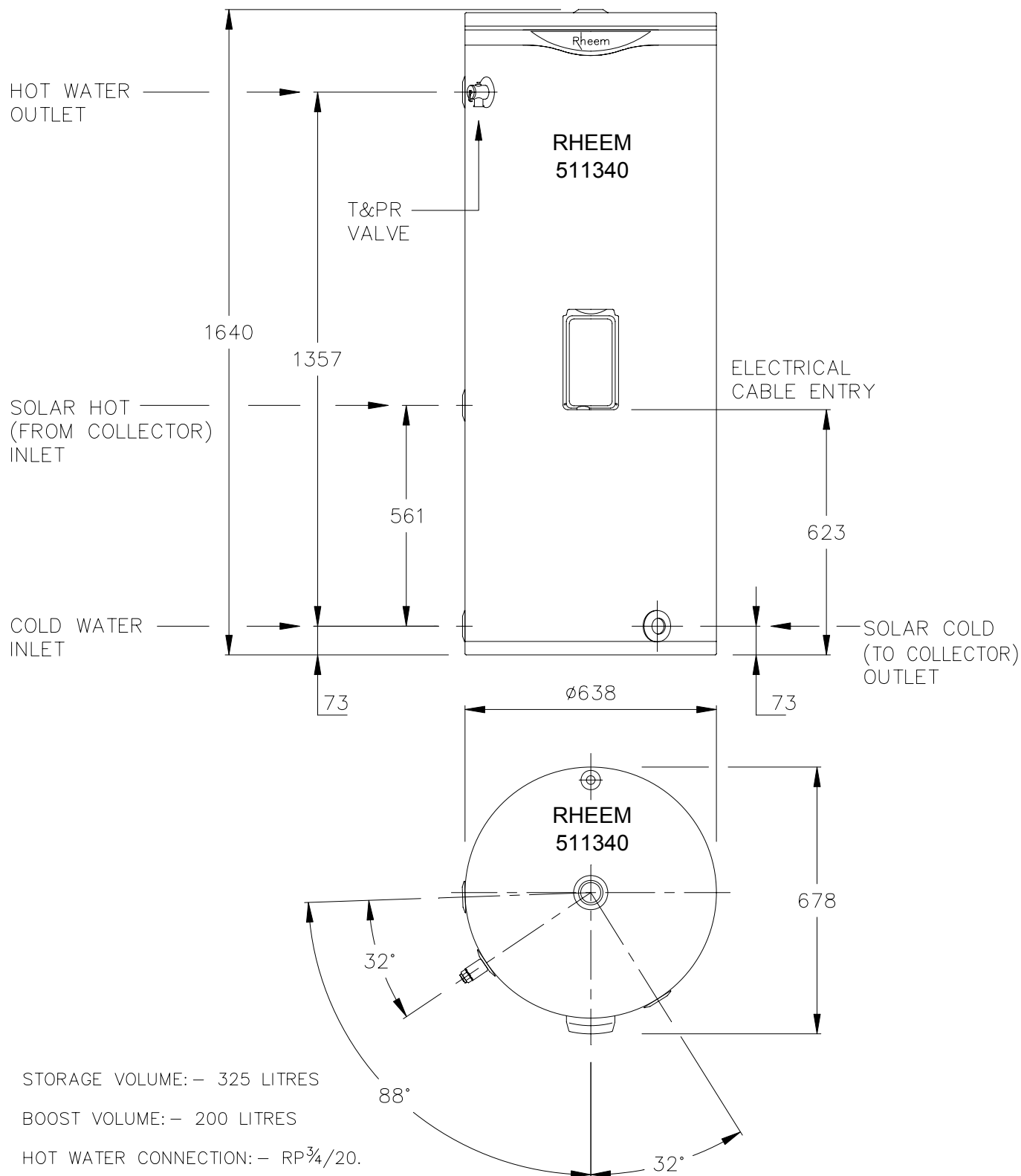
SOLAR COLD (TO COLLECTOR) CONNECTION: – DN15 COMPRESSION FITTING.
(SOLAR COLD WATER OUTLET FROM TANK: $RP\frac{3}{4}/20$).

T&PR VALVE CONNECTION: – $RP\frac{1}{2}/15$.

WEIGHT: – 70kg.

RHEEM WATER HEATER SOLAR ELECTRIC BOOST 511270





STORAGE VOLUME: – 325 LITRES

BOOST VOLUME: – 200 LITRES

HOT WATER CONNECTION: – $RP\frac{3}{4}/20$.

COLD WATER CONNECTION: – $RP\frac{3}{4}/20$.

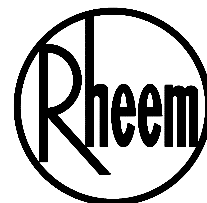
SOLAR HOT (FROM COLLECTOR) CONNECTION: – DN15 COMPRESSION FITTING.
(SOLAR HOT WATER INLET TO TANK: $RP\frac{3}{4}/20$).

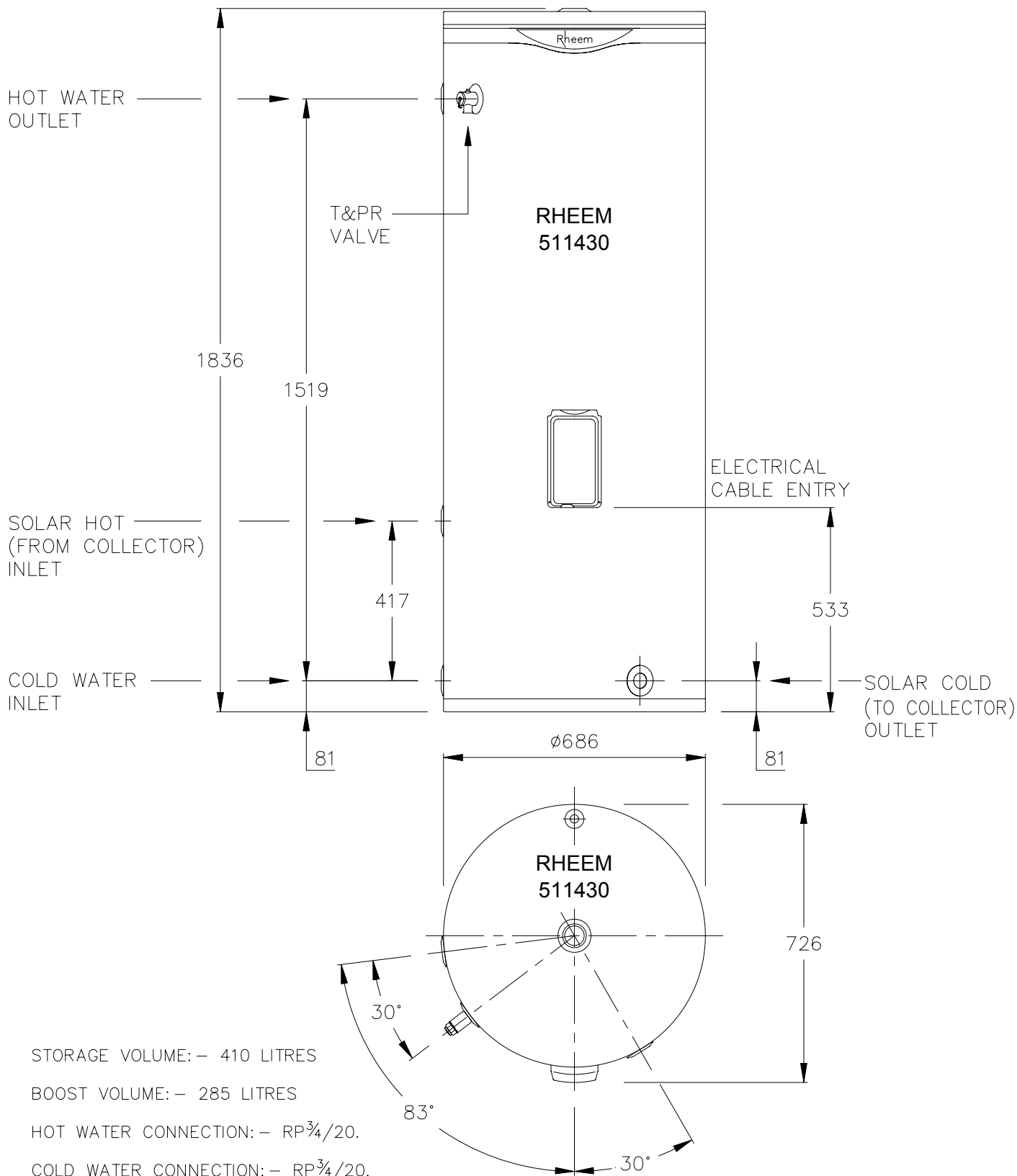
SOLAR COLD (TO COLLECTOR) CONNECTION: – DN15 COMPRESSION FITTING.
(SOLAR COLD WATER OUTLET FROM TANK: $RP\frac{3}{4}/20$).

T&PR VALVE CONNECTION: – $RP\frac{1}{2}/15$.

WEIGHT: – 87kg.

RHEEM WATER HEATER SOLAR ELECTRIC BOOST 511340





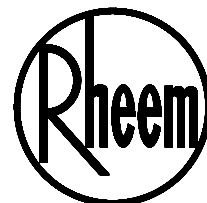
SOLAR HOT (FROM COLLECTOR) CONNECTION: – DN15 COMPRESSION FITTING.
(SOLAR HOT WATER INLET TO TANK: RP $\frac{3}{4}$ /20).

SOLAR COLD (TO COLLECTOR) CONNECTION: – DN15 COMPRESSION FITTING.
(SOLAR COLD WATER OUTLET FROM TANK: RP $\frac{3}{4}$ /20).

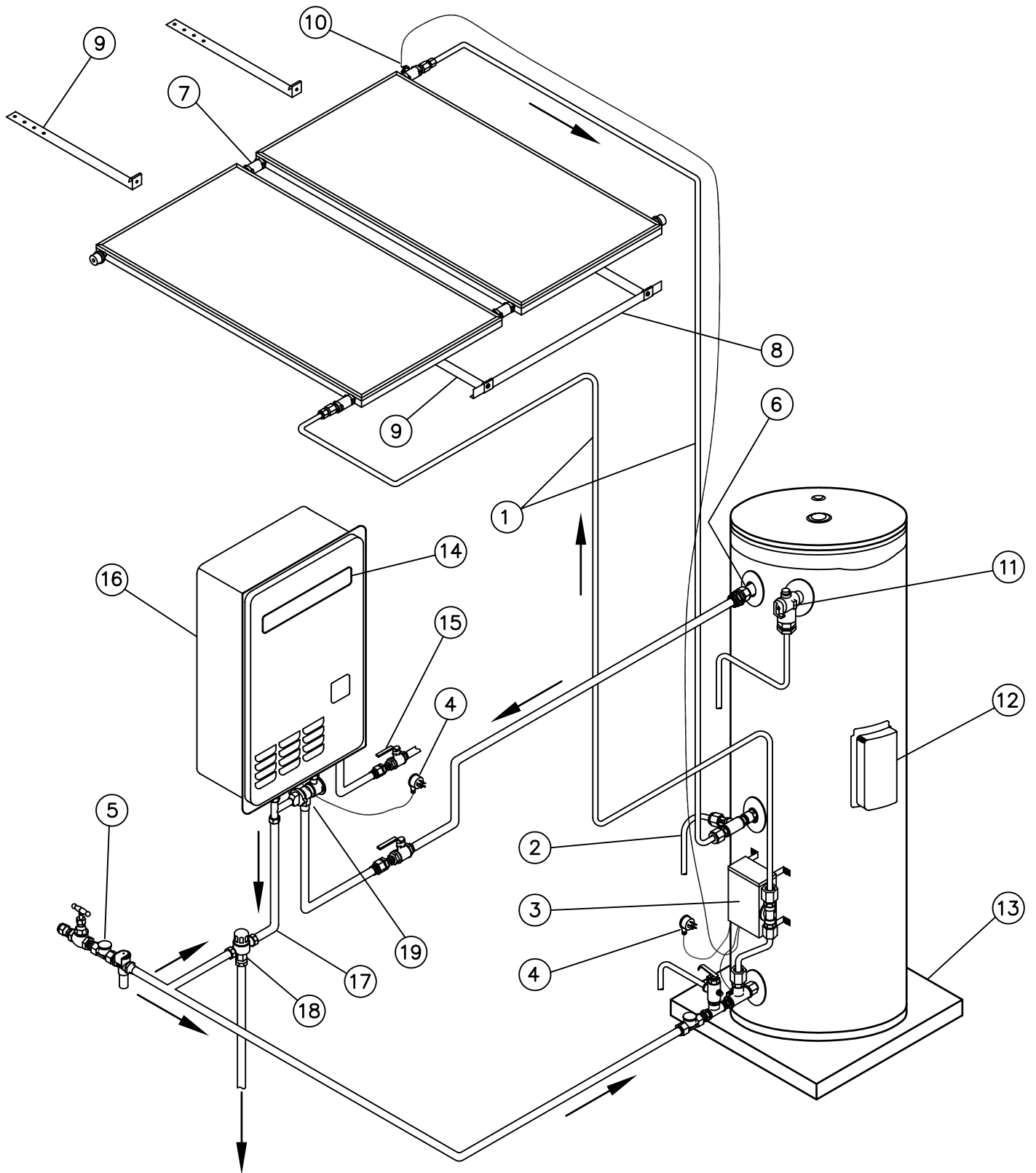
T&PR VALVE CONNECTION: – RP $\frac{1}{2}$ /15.

WEIGHT: – 111kg

RHEEM WATER HEATER SOLAR ELECTRIC BOOST 511430

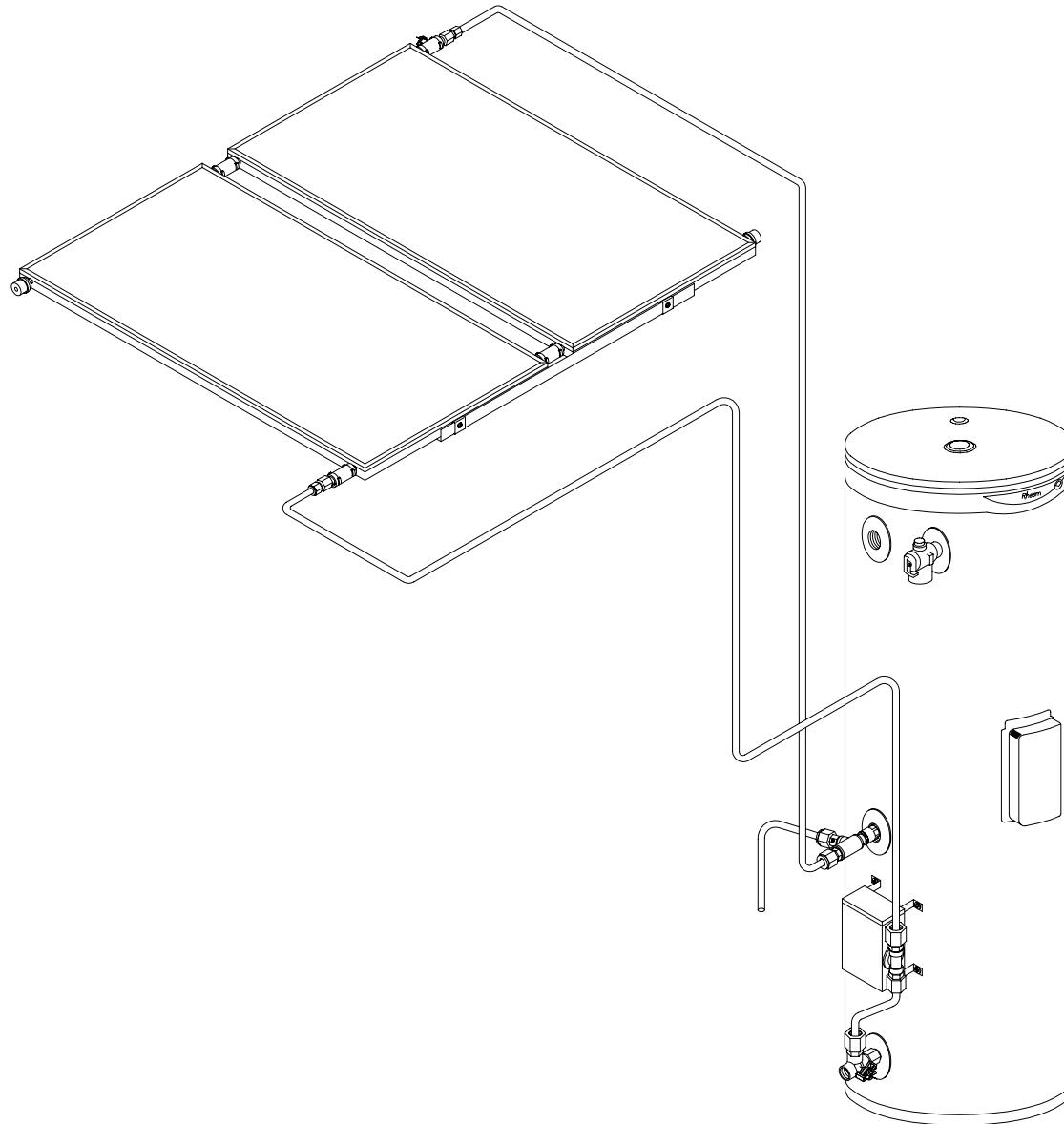


TYPICAL INSTALLATION SOLAR WITH GAS BOOSTER



LEGEND

- | | |
|---|---|
| 1. Solar flow and return insulated copper pipe. | 11. Temperature Pressure Relief Valve and drain line. |
| 2. Solar bleed valve and drain. | 12. Electric boost unit. |
| 3. Solar control unit. | (No Electrical connection with Gas Boost Models) |
| 4. Power supply cord 10A GPO. | 13. Water heater support. |
| 5. Cold water connection to local regulations. | 14. Flue Outlet. Clearances must comply with AS 5601. |
| 6. Solar preheat (hot water) outlet | 15. Gas supply . |
| 7. Quick fit connectors. | 16. Gas Booster Rheem Integrity 24. |
| 8. Collector angle. | 17. Hot water outlet. |
| 9. Collector fixing strap. | 18. Tempering Valve. |
| 10. Hot Sensor. | 19. Solar Bypass Valve. |



Rheem Solar 511 Series Electric Boost – Installation Schematic

TWO TEMPERATURE ZONES USING A TEMPERATURE LIMITING DEVICE

